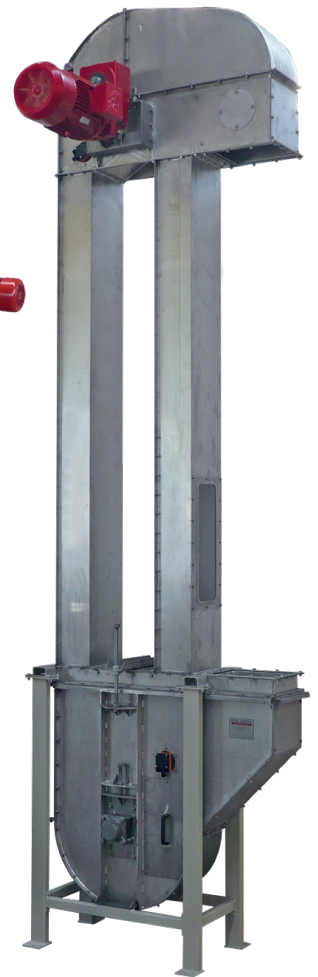
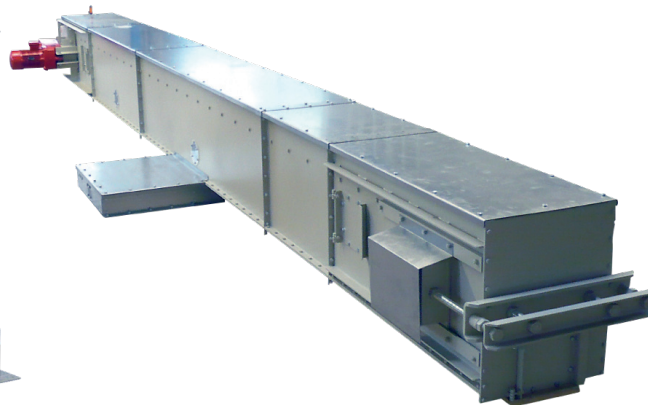


GEBR. RUBERG

Maschinenfabrik

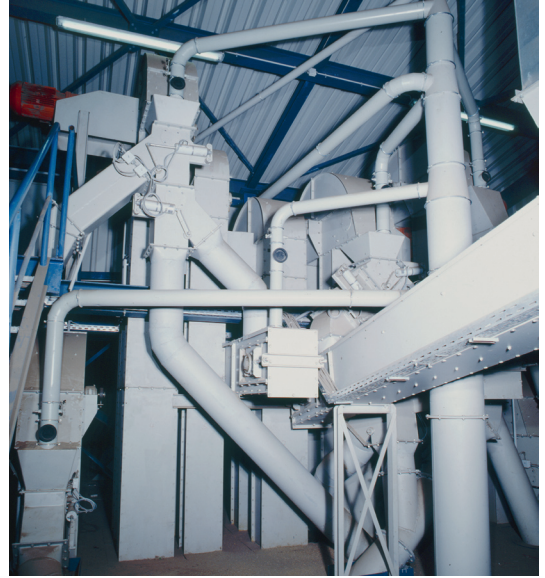
**CORRECTLY SORTED
AND CLEAN,
HORIZONTAL AND
VERTICAL**



RUBERG Conveyor Components

RUBERG Conveyor Components

For every capacity range and every purpose,
in normal or stainless steel.



Powerful system parts for horizontal and vertical transport of bulk materials which flow freely and less freely.

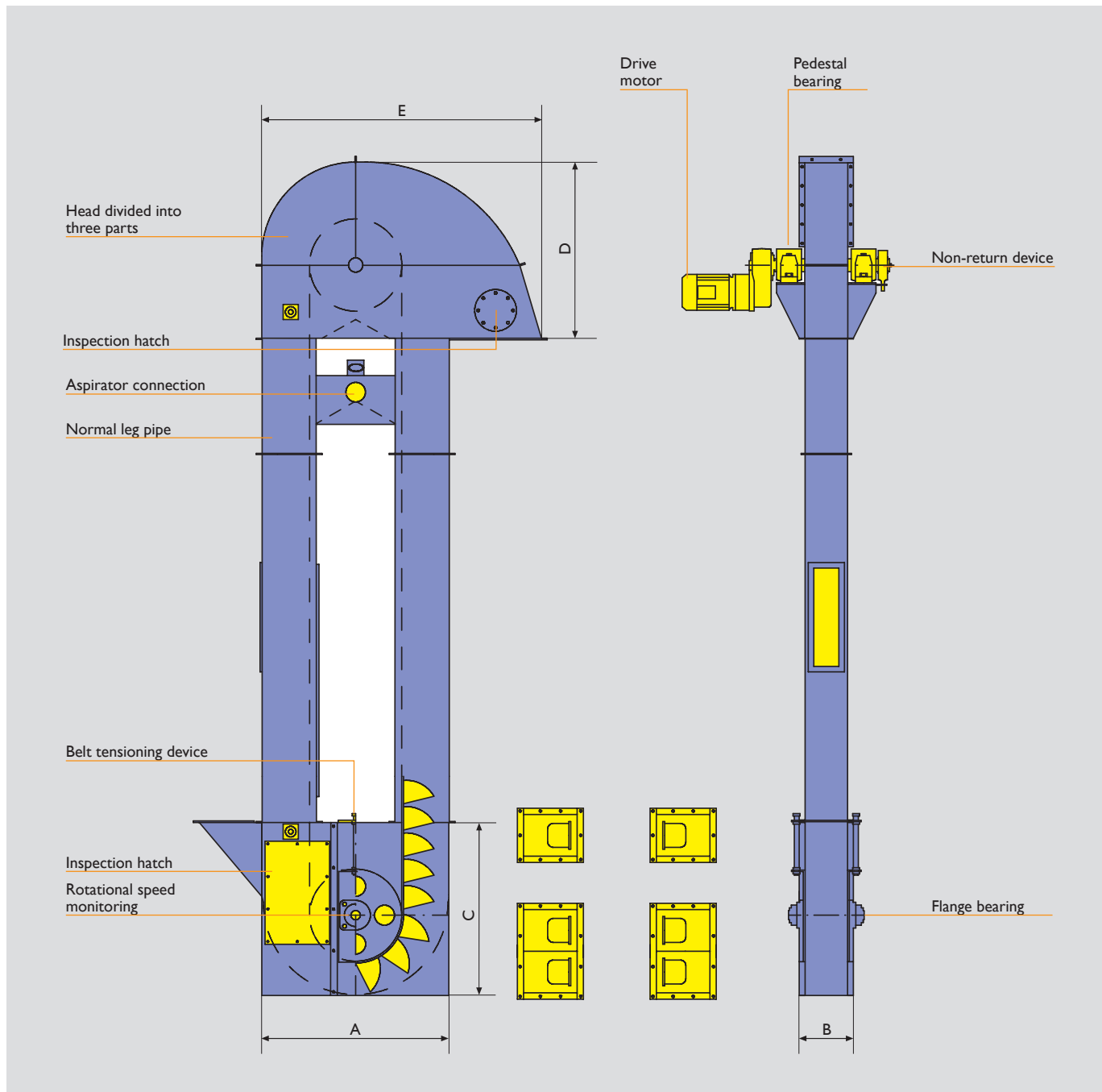
For ratings from 5 to 1,000 m³/h. More detailed information is available on the following pages.



Contents

<p>RUBERG Bucket Conveyors For vertically transporting bulk materials, conveyor capacity 5 - 1,000 m³/h, belt disc diameter 300 to 1,000 mm</p>	<p>Page 4 Page 5</p>
<p>RUBERG Trough Chain Conveyors For horizontally and vertically transporting bulk materials, conveyor capacity 5 - 1,000 m³/h, enclosed modular system</p>	<p>Page 6 Page 7</p>
<p>RUBERG Conveyor Belts For horizontally transporting bulk materials, conveyor capacity 5 - 1,000 m³/h, open or enclosed modular system, for loading or emptying warehouses, with scrabbers for ideal bulk material levelling in flat stores</p>	<p>Page 8 Page 9</p>
<p>RUBERG Screw Conveyors For horizontally and vertically transporting bulk materials, conveyor capacity 1 - 250 m³/h, screw diameter 100 - 800 mm, modular design, as pipe or trough screw conveyor</p>	<p>Page 10 Page 11</p>
<p>RUBERG Conveyor Systems Silo equipment with bucket and trough chain conveyor, conveyor belts and screw conveyor</p>	<p>Page 12</p>

RUBERG Bucket Conveyors



Performance data for bucket conveyors

for a bulk weight of 0,75 kg/l

Type	Output up to	Belt disc Ø	Belt disc width	Belt width	Bucket width	Dimensions in mm				
						A	B	C	D	E
BWF 400/140	25 t/h	400 mm	140 mm	120 mm	100 mm	700 mm	220 mm	950 mm	830 mm	1.100 mm
BWF 400/170	40 t/h	400 mm	170 mm	150 mm	130 mm	710 mm	220 mm	950 mm	830 mm	1.100 mm
BWF 500/170	40 t/h	500 mm	170 mm	150 mm	130 mm	920 mm	220 mm	960 mm	920 mm	1.420 mm
BWF 500/220	100 t/h	500 mm	220 mm	200 mm	180 mm	920 mm	280 mm	960 mm	990 mm	1.420 mm
BWF 500/280	150 t/h	500 mm	280 mm	250 mm	230 mm	1.010 mm	395 mm	960 mm	990 mm	1.510 mm
BWF 630/380	200 t/h	630 mm	330 mm	300 mm	280 mm	1.400 mm	500 mm	1.440 mm	1.235 mm	1.920 mm
BWF 630/380	300 t/h	630 mm	380 mm	350 mm	330 mm	1.500 mm	550 mm	1.440 mm	1.240 mm	1.950 mm

RUBERG *Bucket Conveyors*

Single or double **RUBERG bucket plant conveyors**, as a belt or chain bucket conveyor with a capacity of 5 to 1,000 m³/h, in normal, stainless or special steel design, custom-made designs also in wood.

- The ideal solution for vertical transport! Gentle product treatment. Coarse, fine-grained and powdery bulk materials are powerfully and flexibly conveyed.
- Special building circumstances or deployment locations are a special challenge for us due to the flexible modular design.
- Performance and product type dictate the design and the bucket type and also the belts. Buckets are available in normal or stainless steel or plastic. Rubber elevator belts are available in normal or oil/grease-proof design.



Design variants

Three-part bucket head with built-in belt disc or chain wheels with solid bearings and a head lining made of non-wearing material. Driven by a hollow-shaft drive motor. With safety equipments such as a non-return device and skewing monitoring.

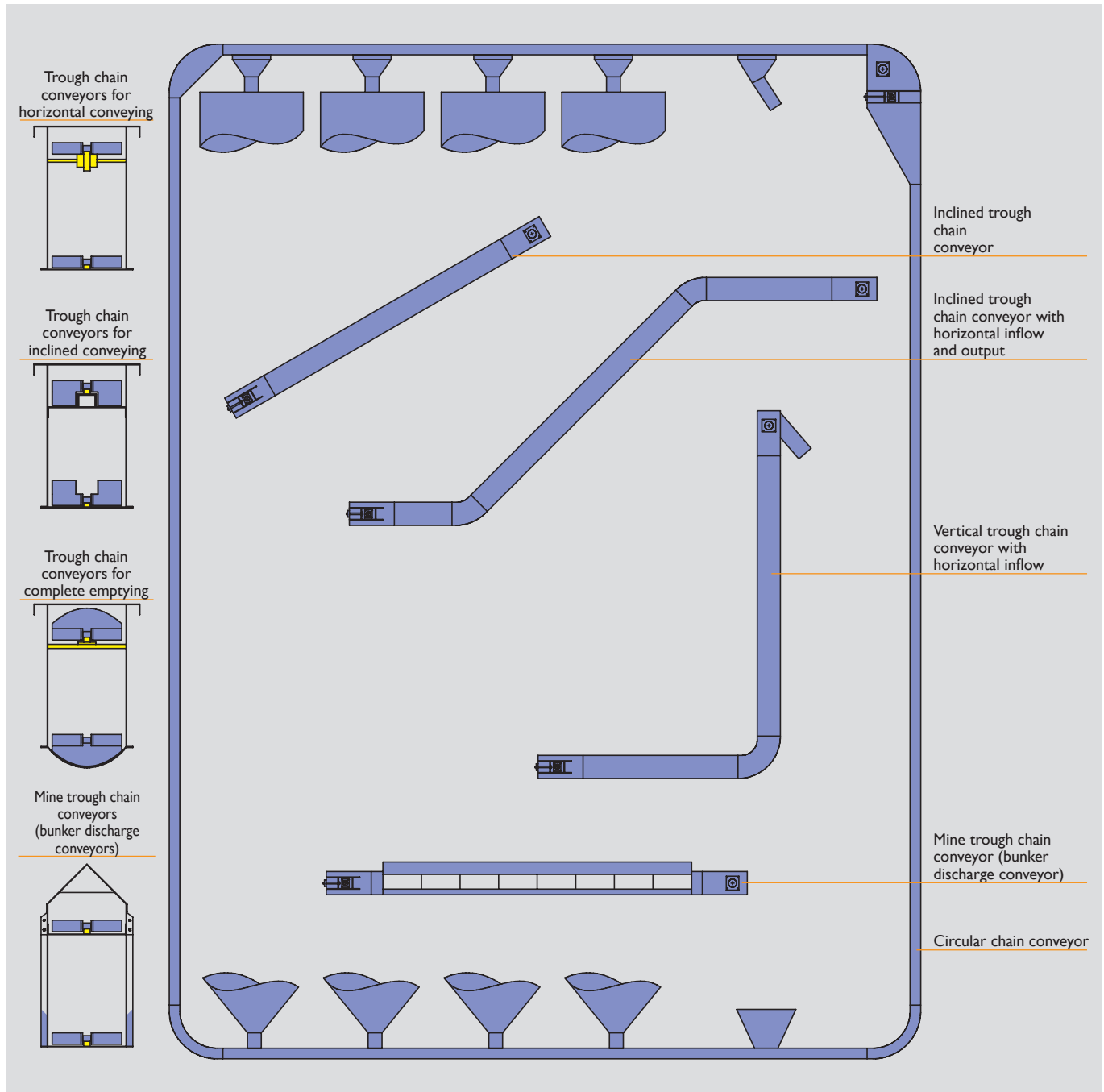
Rectangular or round normal legs in graduated lengths. Each leg with built-in installation flap and inspection window.

Bucket foot with smooth belt disc, metallic grid disc or chain wheels. Inlet lug on one or both sides. Feed dosing by means of gear racks or hand sliders. With cleaning sliders on both sides. Mechanical equipment to tension the belts or chains with a non-return device and skewing and rotational speed monitoring for safety reasons.

The foot is optionally available as a non-transportable round base design, alternatively with a large output slider below the foot for complete emptying.

Bucket conveyor in a shock pressure-resistant design with rupture disk and pressure relief channel. All bearings are available with temperature monitoring as an option.

RUBERG Trough Chain Conveyors



Performance data for trough chain conveyors

for heavy cereals of 0.75 kg/l

Type	Performance to	Total chain width	Chain division	Trough width	Trough height	Drive unit length	Tensioning unit length
TKF 190	25 t/h	170 mm	125 mm	190 mm	400 mm	946 mm	946 mm
TKF 220	40 t/h	200 mm	125 mm	220 mm	440 mm	946 mm	946 mm
TKF 255	70 t/h	235 mm	125 mm	255 mm	440 mm	946 mm	946 mm
TKF 315	120 t/h	300 mm	150 mm	315 mm	440 mm	946 mm	946 mm
TKF 400	150 t/h	380 mm	150 mm	400 mm	460 mm	946 mm	946 mm
TKF 500	300 t/h	480 mm	160 mm	500 mm	690 mm	1.430 mm	1.430 mm

RUBERG Trough Chain Conveyors

RUBERG trough chain conveyors in flexible design with capacities from 5 to 1,000 m³/h. Drag link conveyors in an enclosed sheet steel housing pull the bulk material completely dust-free.

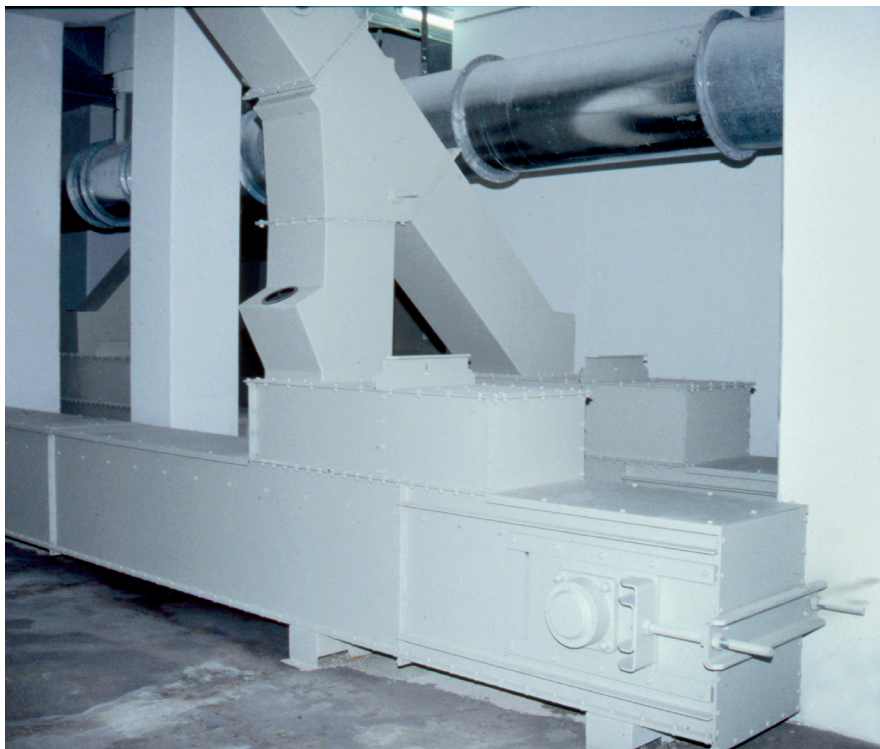
- The bulk material is especially gently treated due to the low chain speed.
- An enclosed housing prevents dust emissions and contamination.
- Infeed and discharge points can be flexibly positioned.
- Correctly sorted emptying is guaranteed by the convex bottom. Plastic drivers ensure quiet operation.
- Plastic covers are optionally available to minimise drive power output and noise emissions.

The drive unit is in a reinforced sheet steel design with a hardened chain wheel and industrial ball bearings. Drive is provided via a hollow-shaft drive motor with damped torque support.

Tensioning unit with pull and push spindles to tension the conveyor chain, with built-in deflection chain wheel and industrial ball bearings.

Trough faces available in different lengths. Trough chain conveyor with a single floor and threaded guide rail, with ball bearing-mounted rollers for returning the conveying chain.

In the version fitted with an intermediate floor, rails help to guide back the chain. The troughs are flanged to allow them to be connected.



Single or multi-line trough conveyor chain with curved, welded or threaded carriers. Bearing bushes, bolts and chain link plates are made of high-quality hardened steel.

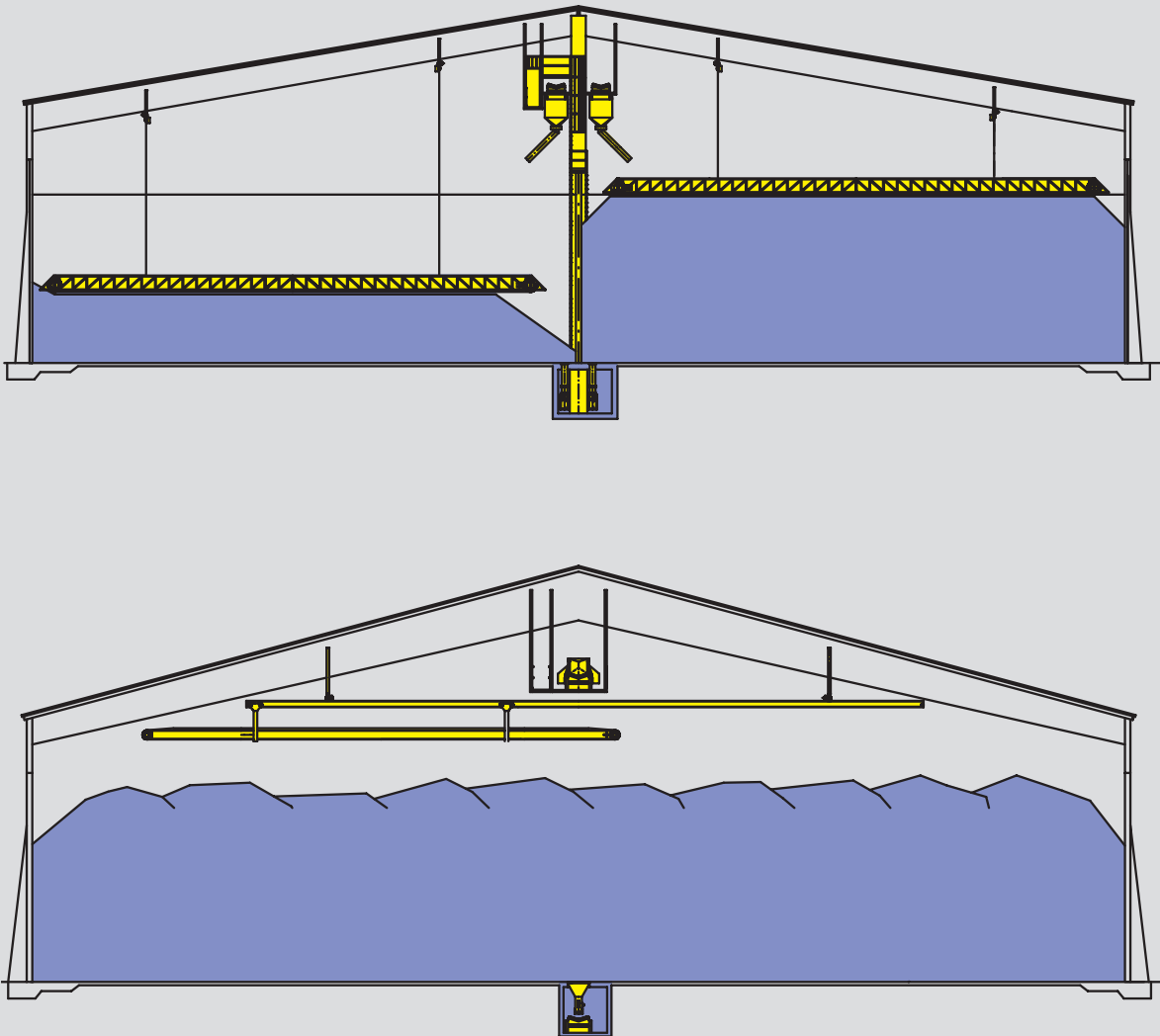
Made of normal steel and primed for indoor use. A galvanised and moisture-proof version is available for outdoor areas. Also available in stainless steel, pickled and passivated or ground and glass bead blasted for special applications.

Capacitive overflow sensor, rotational speed monitor and trough sections with inspection window are available as accessories.

RUBERG Conveyor Belts

Sample deployment

Cost-effective storage and removal of cereals and oilseeds in horizontal silo systems (warehouses)



To fill the warehouse, the product moves over a stationary conveyor belt to the centre of the warehouse. A lateral conveyor belt distributes the product laterally and axially across the entire area of the warehouse.

In case of sub-divided warehouses, all parts of the warehouse can be accessed by the product by means of swivelling pipes at the discharges on the longitudinal conveyor belt.

Bulk material levelling is achieved by means of a scrubber, belt or screw system.

To empty the warehouse, scrubbers attached to longitudinally moving hoists can be lowered for product removal.

RUBERG Conveyor Belts

Design variants

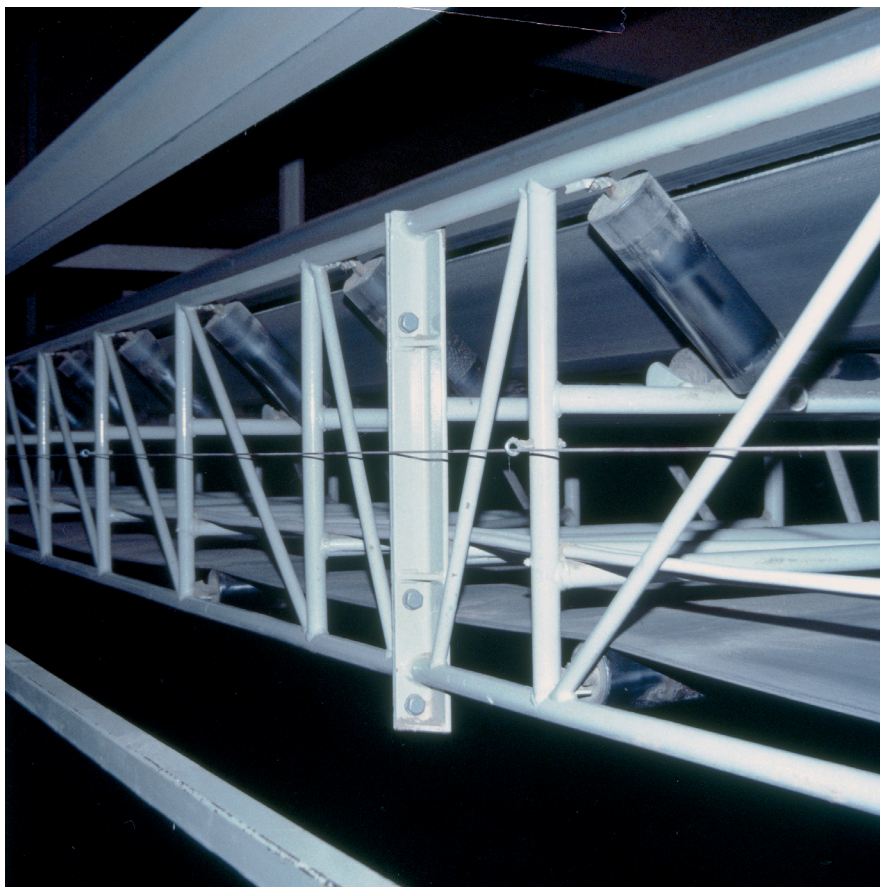
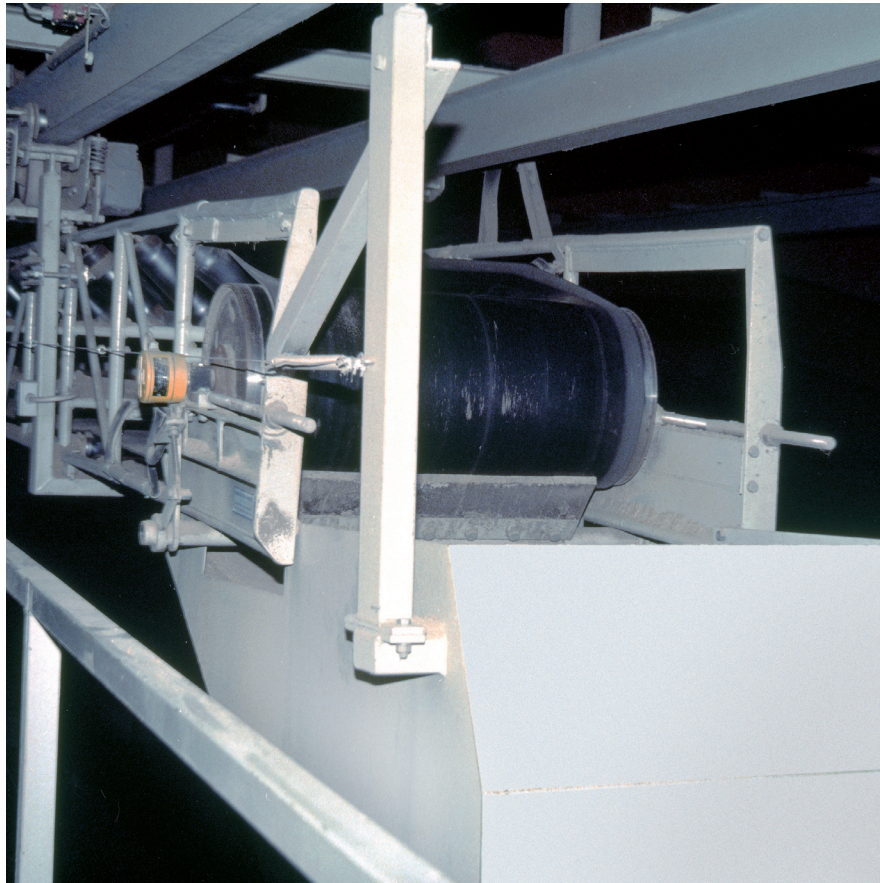
RUBERG Conveyor belts are available as powerful constant conveyors for all types of cereal, oilseed, feed, fertiliser and other bulk materials.

Various belt widths permit maximum performance from 5 to 1,000 m³/h with a minimum of power.

RUBERG Conveyor belts are highly suitable for filling and emptying warehouses.

Built in modular form consisting of the drive and discharge unit, the intermediate sections and the tensioning unit.

Drive is provided by a drum motor or a directly coupled drive motor. The tensioning unit is fitted with threaded spindles or counterweights to tension the belts.



The sections with bearing rollers which are two or three-part moulded designs and have belt return rollers. The bearing rollers have maintenance-free ball bearings.

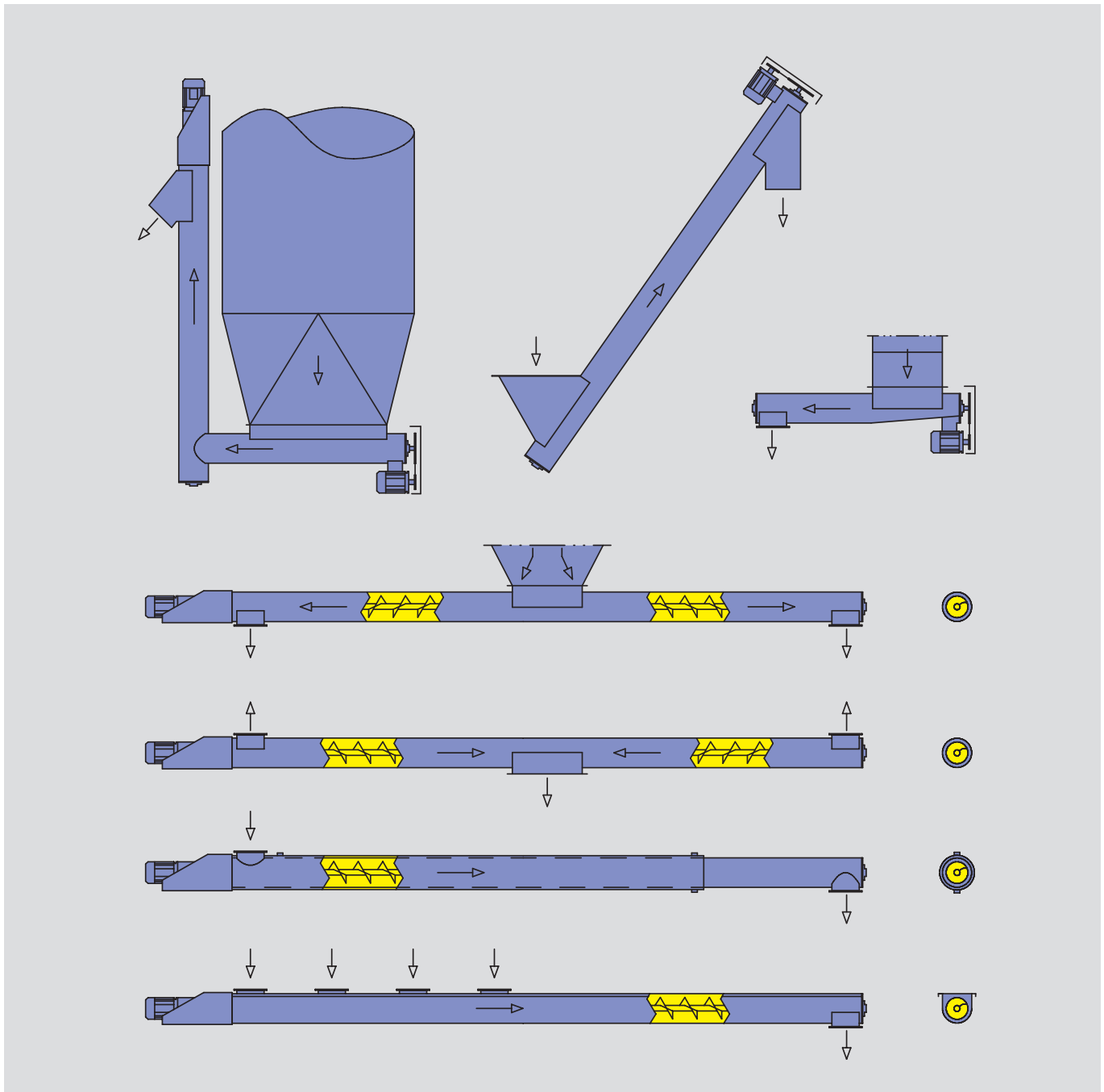
Possible belt widths are 300 mm, 400 mm, 500 mm, 600 mm, 800 mm, 1,000 mm, 1,200 mm, 1,500 mm and 2,000 mm. The belt is continuously vulcanised along its entire length.

RUBERG Conveyor belts can be supplied primed or galvanised in steel or in stainless steel, complete with a galvanised rain hood if set up outdoors.

Complete with belt feed unit and outlet funnel or belt discharge wagon.

High functional safety is guaranteed by electronic skewing and rotational speed monitors and also optional capacitive overflow sensors in the inflow and discharge funnels.

RUBERG Screw Conveyors



A highly versatile conveyor component which is suitable for all kinds of bulk materials due to its different variants. Minimal space required due to its extremely compact design. It offers a dust-free environment due to a low screw rotational speed and an enclosed housing. Screws are available in normal and stainless steel or special steel in all diameters and lengths.

Depending on the application, **RUBERG Screw conveyors** are deployed for vertical and horizontal transport. Dosing screws, discharge screws, collecting screws and other variants offer further applications with normal, conical or progressive threads.

Material thicknesses depend on the application and the deployment area.

Variants are available for foodstuffs and chemical applications in stainless steel and in non-wearing materials for abrasive bulk materials. An anti-adhesion coating for products which bake on is also available.

Short screws are freely mounted on one side; larger ones are produced with intermediate bearings.

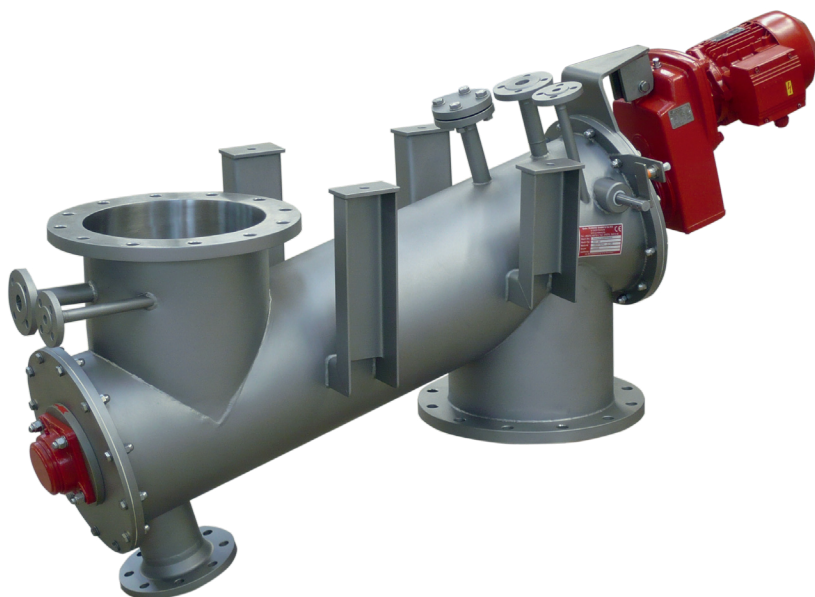
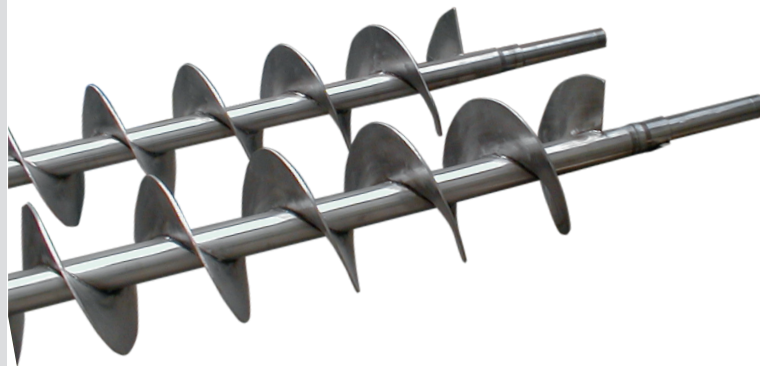
RUBERG Screw Conveyors

Design variants

RUBERG Screw conveyors as welded steel sheet construction. Head pieces have integrated or fitted bearings. Drive and bearing pins are sealed with floating ring seals, shaft sealing rings or packing glands.

Drive types include e.g. hollow-shaft drive motors, electric motors with elastic coupling, hydraulic motors, belt or chain drive.

The modular screw trough or pipe is flanged or welded in one piece. It consists of a thick-walled core pipe with coils welded on both sides.



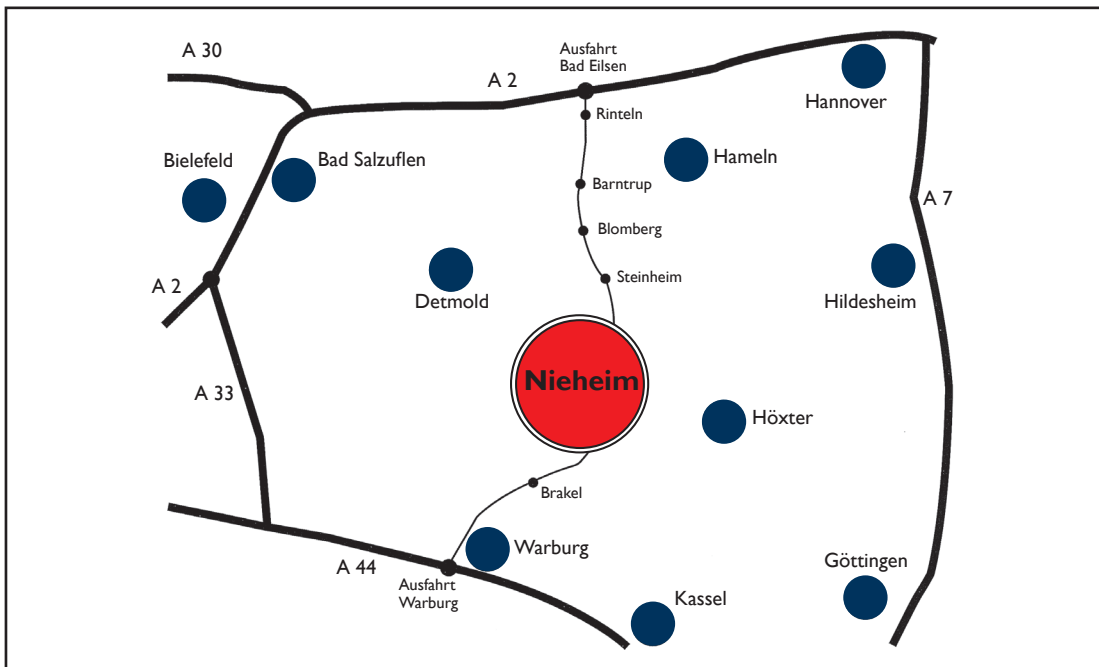
Maintenance-free, automatically lubricated or self-lubricating bearing materials are available for long screws.

For technical process use with heating or cooling sleeve and heated or cooled screw coils. Available as a mixed tool in special forms, e.g. paddle screws.

The normal steel version is primed for indoor use. A moisture-proof galvanised version is available for outdoor use. It is also available in stainless steel, pickled and passivated or ground and glass bead-blasted for special applications.



The Gebr. RUBERG GmbH & Co. KG engineering works was founded in 1848 as a family concern. Over several decades, a modern engineering factory emerged from the initial main production of wind- and watermills. Our manufacturing programme comprises complete planning, production and installation of entire systems and individual machines for cereal stores, feed works, independent silo systems and also powder and bulk material conveying. A proven staff of 50 employees has made innovation and professionalism its business. The tests and experiments conducted in our technical facilities allow us to develop equipment and machines to the newest techniques and standards.



GEBR. RUBERG
Maschinenfabrik

Gebr. Ruberg GmbH & Co. KG
 P.O.B. 1149 · D-33035 Nieheim
 Christian-Ruberg-Straße · D-33039 Nieheim
 Phone +49(0)5274 - 98510-0 · Fax +49(0)5274 - 98510-50
 www.g-ruberg.de
 eMail: sales@g-ruberg.de